

47117

# STONEWAL ESTATES P.U.D.

BEING A PORTION OF SECTION 14, 23, & 26, TOWNSHIP 42 SOUTH, RANGE 41 EAST, PALM BEACH COUNTY, FLORIDA.

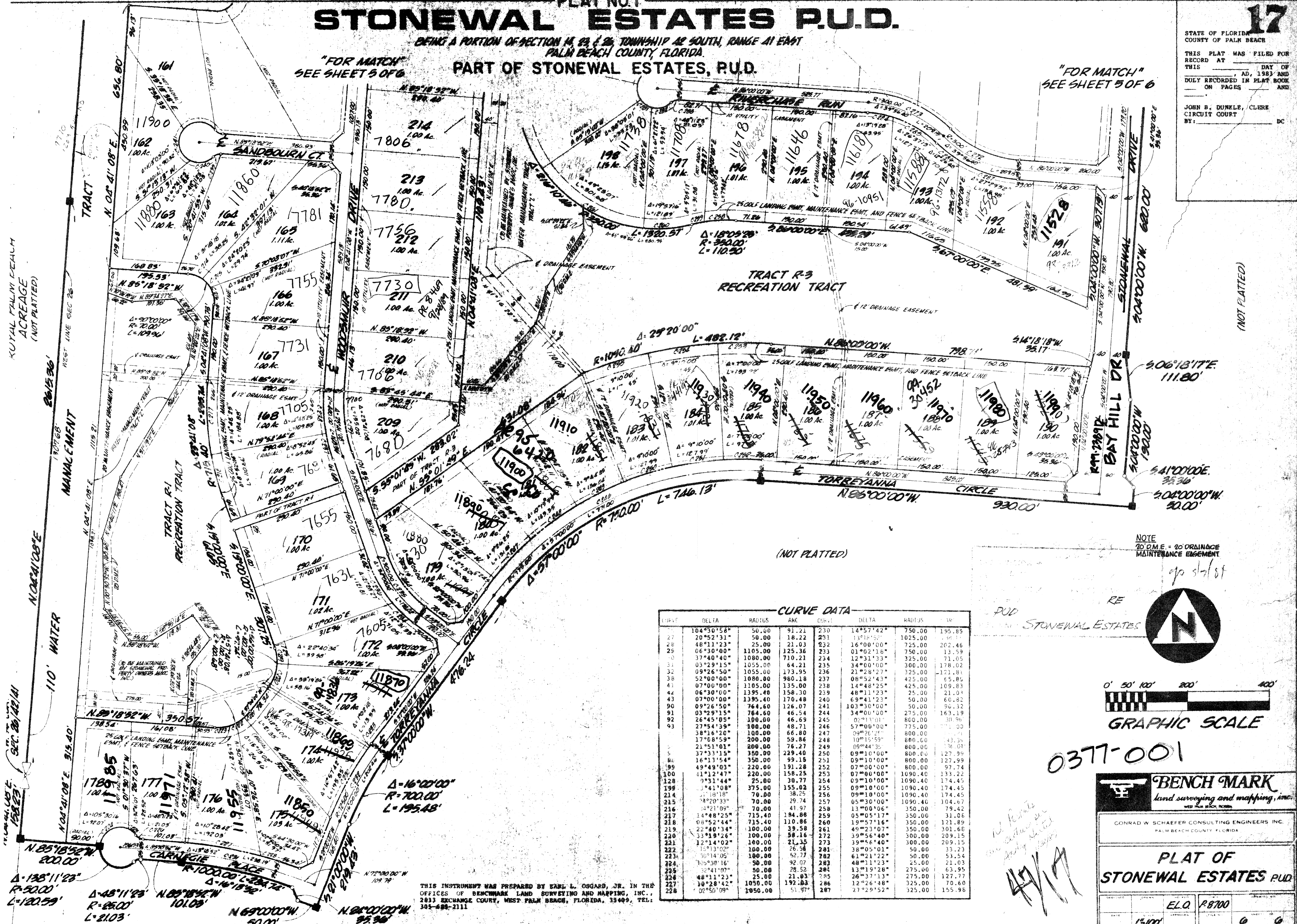
"FOR MATCH" SEE SHEET 5 OF 6 PART OF STONEWAL ESTATES, P.U.D.

**17**

STATE OF FLORIDA  
COUNTY OF PALM BEACH

THIS PLAT WAS FILED FOR RECORD AT THIS \_\_\_\_\_ DAY OF \_\_\_\_\_, AD, 1983 AND DULY RECORDED IN PLAT BOOK \_\_\_\_\_ ON PAGES \_\_\_\_\_ AND \_\_\_\_\_

JOHN B. DUNKLE, CLERK  
CIRCUIT COURT  
BY: \_\_\_\_\_ DC

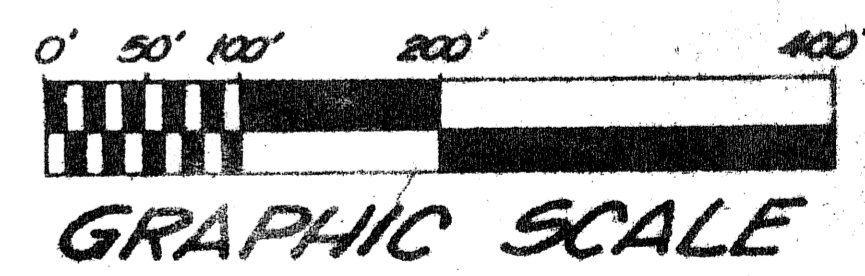


(NOT PLATTED)

NOTE TO D.M.E. = 20 DRAINAGE MAINTENANCE EASEMENT

**CURVE DATA**

STATION	DELTA	RADIUS	ARC	CHORD	DELTA	RADIUS	CHORD
1	104°30'58"	50.00	91.21	230	14°57'42"	750.00	195.85
27	20°52'31"	50.00	18.22	231	13°14'53"	1025.00	194.70
28	48°11'23"	25.00	21.03	232	16°00'00"	725.00	202.46
29	06°30'00"	1105.00	125.36	233	01°02'16"	750.00	13.59
30	37°40'40"	1080.00	710.21	234	12°31'33"	325.00	71.05
31	03°29'15"	1055.00	64.21	235	34°00'00"	300.00	178.02
32	09°26'50"	1055.00	173.95	236	21°28'27"	325.00	121.81
38	52°00'00"	1080.00	980.18	237	08°52'43"	425.00	65.89
41	07°00'00"	1105.00	135.00	238	14°48'25"	425.00	109.83
42	06°30'00"	1395.40	158.30	239	48°11'23"	25.00	21.04
43	07°00'00"	1395.40	170.48	240	69°41'23"	50.00	60.82
90	09°26'50"	764.60	126.07	241	103°30'00"	50.00	90.12
91	03°29'15"	764.60	46.54	244	04°00'00"	275.00	163.19
92	26°45'05"	100.00	46.69	245	03°11'01"	800.00	30.90
93	27°54'39"	100.00	48.71	246	57°00'00"	775.00	111.30
44	38°16'20"	100.00	66.80	247	04°26'20"	800.00	11.71
170	17°08'59"	200.00	59.86	248	10°15'59"	800.00	43.31
21	21°51'01"	200.00	76.27	249	09°44'35"	800.00	126.03
37	37°33'15"	350.00	229.40	250	09°10'00"	800.00	127.99
5	16°13'54"	350.00	99.15	251	09°10'00"	800.00	127.99
199	49°49'03"	220.00	191.28	252	07°00'00"	800.00	97.74
128	41°12'47"	220.00	158.25	253	07°00'00"	1090.40	133.22
129	0°31'44"	25.00	30.77	254	09°10'00"	1090.40	174.45
199	0°41'08"	375.00	155.02	255	09°10'00"	1090.40	174.45
214	0°18'18"	70.00	38.25	256	09°10'00"	1090.40	174.45
215	0°20'33"	70.00	29.74	257	05°30'00"	1090.40	104.67
216	0°21'09"	70.00	41.97	258	13°00'06"	350.00	79.42
217	14°08'25"	715.40	184.88	259	05°05'17"	350.00	31.06
218	08°52'44"	715.40	110.86	260	19°57'16"	350.00	121.89
219	22°40'34"	100.00	39.58	261	49°23'07"	350.00	301.66
220	33°18'26"	100.00	58.16	272	39°56'40"	300.00	209.15
221	12°14'02"	100.00	21.35	273	39°56'40"	300.00	209.15
222	15°13'02"	100.00	26.58	281	38°05'01"	50.00	33.23
223	30°14'05"	100.00	52.77	282	61°21'22"	50.00	53.54
224	30°38'16"	50.00	92.07	283	48°11'23"	25.00	21.03
225	30°41'09"	50.00	75.52	284	13°19'28"	275.00	63.98
226	48°31'12"	25.00	21.03	285	26°33'13"	275.00	127.77
227	19°28'42"	1050.00	192.83	286	12°26'48"	325.00	70.60
228	02°50'09"	1950.00	51.97	287	27°29'52"	325.00	155.98



0377-001

**BENCH MARK**  
land surveying and mapping, inc.  
WEST PALM BEACH, FLORIDA

CONRAD W. SCHAEFER CONSULTING ENGINEERS, INC.  
PALM BEACH COUNTY, FLORIDA

PLAT OF  
**STONEWAL ESTATES P.U.D.**

ELQ	P8700
15/100	0 0

THIS INSTRUMENT WAS PREPARED BY EARL L. OSKARD, JR. IN THE OFFICES OF BENCHMARK LAND SURVEYING AND MAPPING, INC., 2813 EXCHANGE COURT, WEST PALM BEACH, FLORIDA, 33409, TEL: 305-694-2111